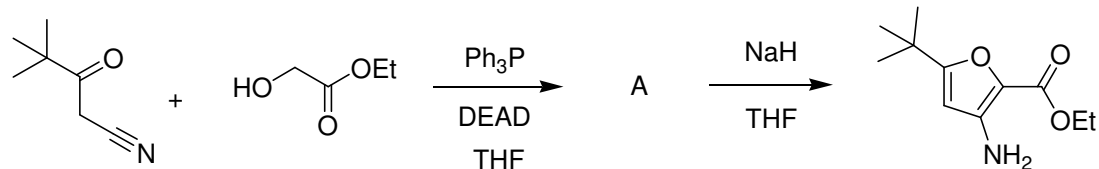


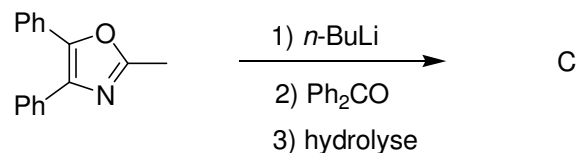
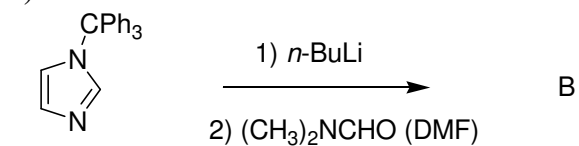
EXERCICE 1

Complétez les réactions :

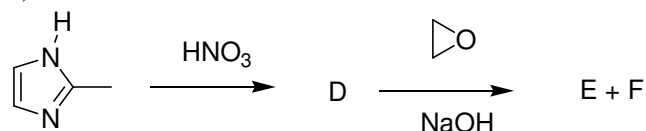
a)



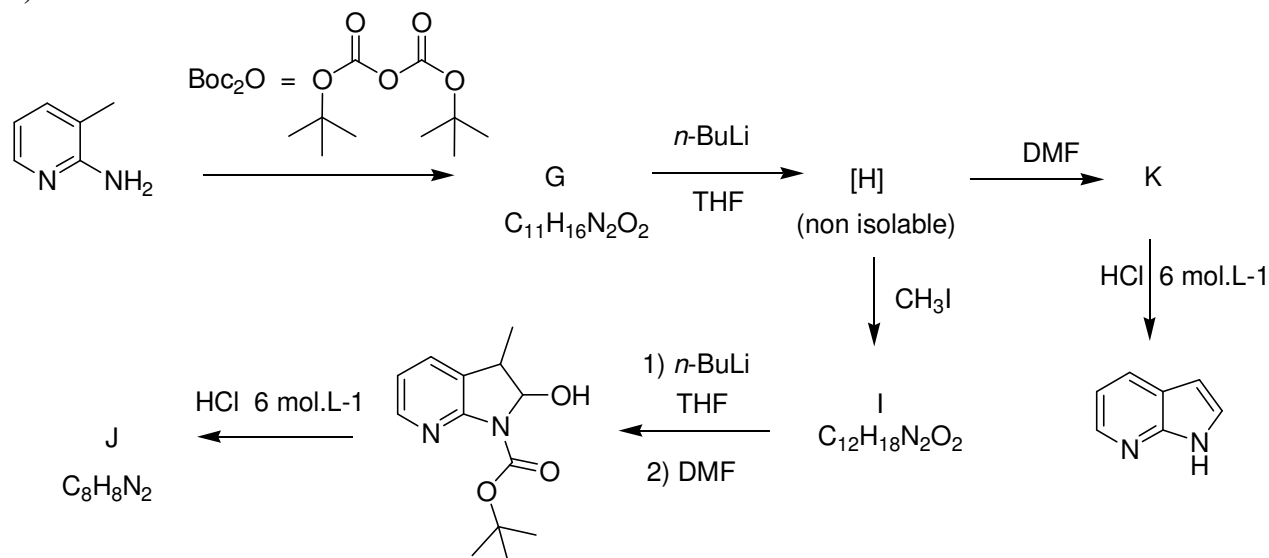
b)

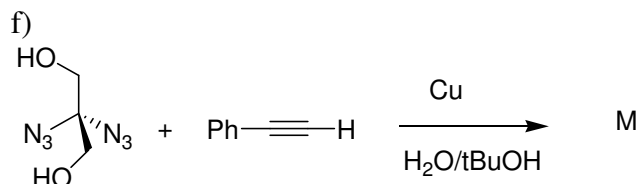
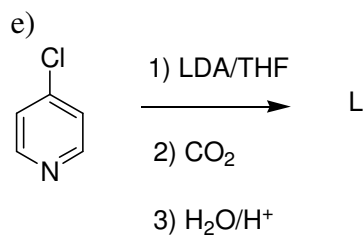


c)

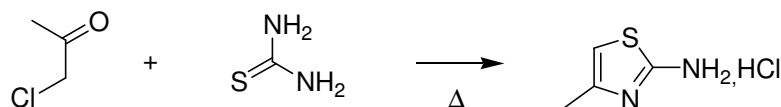


d)

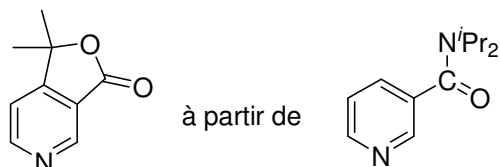
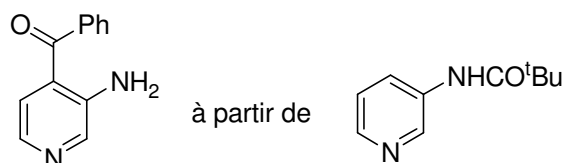


**EXERCICE 2**

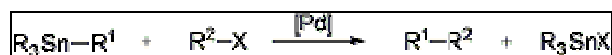
Donnez le mécanisme de la réaction suivante :

**EXERCICE 3**

Proposez une synthèse pour les composés suivants :

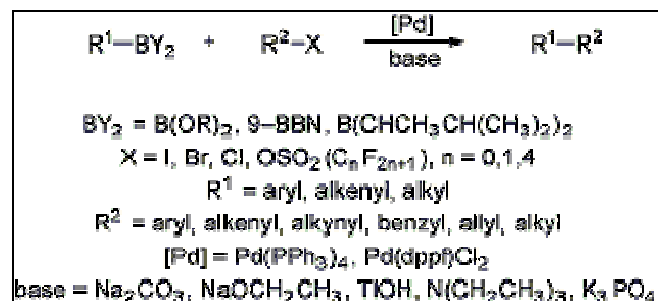
**EXERCICE 4**

Connaissant la réaction de couplage de **Stille**



[Pd] = Pd(PPh₃)₄, PhCH₂Pd(PPh₃)₂Cl
R¹ = alkynyl, alkenyl, aryl, allyl, benzyl, alkyl
R² = acyl, alkenyl, allyl, benzyl, aryl
X = Cl, Br, I, OCOCH₃, OSO₂(C_nF_{2n+1}), n = 0,1,4

Et la réaction de couplage de **Suzuki**



Proposez une ou plusieurs synthèses pour le composé suivant :

